

STEAM & POWER ENGINEERS



Project Site: M/s. Jamkhandi Sugars Ltd. India (Karnataka)

Boiler Capacity: 90 TPH X 72.4 Kg/Cm² Traveling Grate Fired Boiler

Reg. Office:

A-4/306, Rakshak Nagar Gold,
Nagar - Solapur Bypass,
Kharadi, Pune - 411014
India (Maharashtra)

Contact : +91 8554985709 /+91 8554985710

Mobile : +91 9850908663 /+91 9921096172

E-mail : spe.pune@gmail.com

: spe.pune@rediffmail.com

Website : www.speboilers.com

WE ARE SPECIALIZED IN BOILER:

- **Design & Engineering**
- **Consultancy**
- **Modification & Up-gradation**
- **Manufacturing**
- **Erection & Commissioning**
- **Supply of All Boiler Accessories**

INTRODUCTION:

We **STEAM & POWER ENGINEERS** Introduce Our Self as **BOILER MANUFACTURER** in Power & Energy Sector in India. We have well Educated & Experience Holder Team in Design, Engineering, Manufacturing, Erection & Commissioning and Sales & Service in Boiler & Power Plant Field. We Stand in Market with All Sources of Manufacturing Activities, Raw Material Availability, IBR Formalities & Vendor Development. We have Maintained Good Relationship with Customer, Vendor, Supplier & Everybody related to our Firm by any Business Reason.

“DELIVERY IN TIME & CUSTOMER SATISFACTION IS ESSENCE OF OUR BUSINESS. WE ALWAYS TRY TO FOLLOW THE COMMITMENTS.”

Our Reg. Office is based in Pune Surrounded by IT Parks, Reputed International, Multinational Industries, Thousands of Other Industries Engaged in Various Field & Well Business Infrastructure.



GENERAL INFORMATION:

NAME OF COMPANY : STEAM & POWER ENGINEERS

ORGANISATION MEMBER : D. B. RINDHE (Proprietor)
(Experience - 33 Years in Boiler Field)

REGISTERED OFFICE : A-4/306, Rakshak Nagar Gold,
Nagar - Solapur Bypass,
Kharadi, Pune – 411014,
India (Maharashtra)

CORPORATE OFFICE : A-4/106, Rakshak Nagar Gold,
Nagar - Solapur Bypass,
Kharadi, Pune – 411014,
India (Maharashtra)

FACTORY ADDRESS : Gat No. 114/1, R.R. Engineering Complex,
Dingrajwadi, Behind Kalyani Forge,
Near IMP, Koregaon Bhima,
Pune – 412216,
India (Maharashtra)

COMMUNICATION SOURCES :

Contact : +91 8554985709 /+91 8554985710

Mobile : +91 9850908663 /+91 9921096172

E-mail : spe.pune@gmail.com
: spe.pune@rediffmail.com

Website : www.speboilers.com

OUR MAIN PRODUCT : INDUSTRIAL STEAM BOILER
INDUSTRIAL BOILER
WATER TUBE BOILER
SMOKE TUBE BOILER
COMPOSITE BOILER
FBC FURNACE BOILER
WASTE HEAT RECOVERY BOILER
ALL BOILER ACCESSORIES
POWER PLANT



PRODUCTS & SERVICES

WATER TUBE BOILER

Capacity	- 5 To 100 TPH.
Pressure	- 10.5 Kg/Cm ² To 87 Kg/Cm ²
Steam Temp.	- Up To 505 °C.
Fuel	- Multi Fuel, Agro Waste, Bio Mass

SMOKE TUBE BOILER & COMPOSITE BOILER

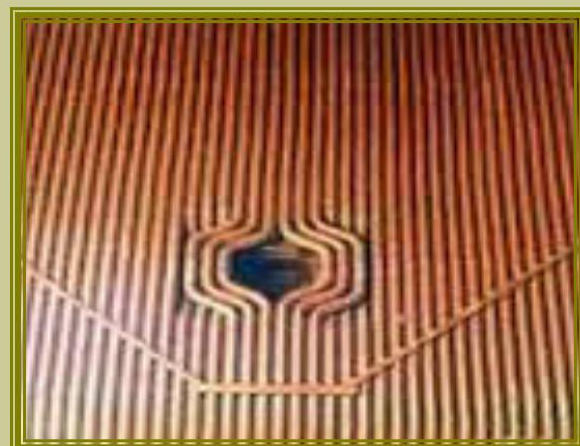
Capacity	- 1 To 20 TPH.
Pressure	- 10.5 Kg/Cm ² To 17.5 Kg/Cm ²
Steam Temp.	- Saturated.
Fuel	- Multi Fuel Oil, Gas, Oil Cum Gas.

WATER TUBE BOILER

- Suspension Burning of Bagasse
- Quick & Easy Ash Removal No Pressure Drop during Ash Cleaning.
- Oil Burning Facility -- Possible.
- Low Excess Air -- Higher Efficiency.
- Quick Response to Load Change -- Greater Reliability.
- Biogas Burning Possible along with Bagasse
- Multi Fuel Simultaneous Burning
- Continuous Ash Discharge
- Step Less Variation of Grate Speed From 0 - 12 M/Hr
- Easy Maintenance

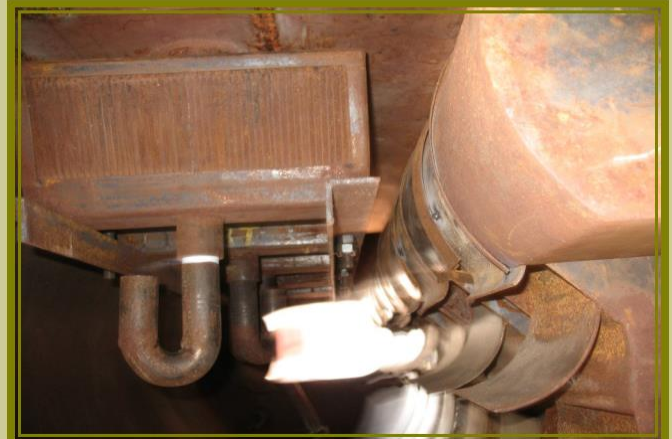
SMOKE TUBE BOILERS

- Capacities From 1 TPH To 20 TPH for Multi Fuel, Oil, Gas, Oil Cum Gas Fired.
- Package Boilers of III Pass, Smoke Tube Type in Completely Wet Back Construction without any Refractory at the Rear.
- Designed to Meet Present Day Demand of High Efficiency, Easy Maintenance, Simple Installation and Low Running Cost.
- The Automatic and Semi Automatic Control.
- Compact Design Requiring Less Space.



BOILER ACCESSORIES AND AUXILIARIES DESIGN, ENGINEERING, SUPPLY, ERECTION AND COMMISSIONING OF:

- All Boiler Pressure Part
- Steam Drum
- Water Drum
- Drum Internal
- Furnace Tube
- Super Heater Tube
- Economiser Tube
- Furnace Header
- Super Heater Header
- Attemperator Header
- Economiser Header
- Air Pre Heater Plate
- Air Pre Heater Tube
- Dumping Grate Furnace
- Traveling Grate Furnace
- Pulsating Grate Furnace
- Moving Grate Furnace
- FBC Grate Furnace
- Fixed Grate Furnace
- Air Pollution Equipments
- Dust Collector Single, Multi, Trim Cyclone
- Wets Scrubber, Bag Filter & ESP
- ID, FD, SA & PA Fans With Drives
- Structure, Ducting & Hopper
- Buck Stay Support For Furnace Tube
- Fuel Handling System
- Ash Handling System
- Soot Blowers of Various Types (LRSB & Rotary)
- Instrumentation
- MCC, Electrical Cable & Starter
- Fuel Bunkers
- Valve & Valve Fittings
- Flanges & Hardware
- Gear Box with Drive
- Motor
- Feed Water Pump,
- Transfer Pump & Turbo Pump
- PRDS & PRV
- Steam Piping & Exhaust Piping
- Support For Steam Piping
- Common Steam Distribution Header (CSDH)
- Steam Separator
- Refractory & Insulation
- LP & HP Chemical Dosing System
- Air Compressor
- DM Plant
- Feed Water Storage Tank
- Deareator
- Deareator Cum Deareator Storage Tank
- Chimney With Accessories (MS & RCC)
- Turbine,
- Gear Box & Alternator
- Power Plant



BOILER REVAMPING & MODERNISATION

SPECIALIZED IN BOILER MODIFICATION & UP-GRADATION

THE MODERNIZATION AND REVAMPING :

- Change in Fuel Fired Like...
 - a. Coal Fired Boiler Converted to Bagasse and Biogas Fired Boiler.
 - b. Oil Fired Boilers to Coal or Bagasse Fired Boilers.
 - c. Stocker Fired Boiler to Fluidized Bed Boiler.
- Increasing Capacity of Boiler by Adding Heating Surfaces in Radiation Zone
- Increasing the Operating Pressures by Changing Only Pressure Parts and Maintaining All Other Non-Pressure Parts as it is.
- We Undertake Jobs of Boiler Shifting along with Modernization.

INSTRUMENTATION

PROCESS CONTROL SYSTEM : DESIGN, ENGINEERING, SUPPLY, ERECTION AND COMMISSIONING OF FOLLOWING

- Process Automation.
- Boiler Instrumentation.
- Start Up Sequence for Boilers, Soot Blowers & Various Processes.
- SCADA (Supervisory Control & Data Acquisition System)
- DCS (Distributed Control System)
- Instrument Panels.
- Microprocessor Based Control System to Suit Specific Control Engineering Application.
- Supply of Instruments for Flow, Pressure, Level, Temperature, Co₂, O₂, Conductivity, PH.
- PRDS. (Pressure Reducing Cum De Superheating Station)

ELECTRICAL

- M.C.C. (Motor Control Centre) & Electrical Control Panel.
- Cable, Starter Etc.



WE ARE SPECIALISED SERVICES TO OUR ESTEEMED CUSTOMER.

CONSULTANCY :

- Study of Expansion & Modernization Scheme.
- Suggestion for Capacity Improvement.
- Increase in Thermal Efficiency with Minimum Spillover of Old Machinery.
- Modern, Cost Effective & Efficient Project.
- Cogeneration System.
- Low Power Consumption System Etc.

PROJECT MANAGEMENT :

- Involve in Planning Scheduling.
- Co - Ordination.
- Monitoring, Procurement Assistance & Inspection.
- Site Supervision & Testing.

BOILER MODIFICATION & UP-GRADATION :

- To Upgrade Existing Boiler Performance.
- Co-Relate Field Data With Calculation.
- Undertake Turnkey Assignment.

BOILER RE -TUBING:

- Supply of Super Heater Coils, Economiser Coils, Furnace Tubes, Boiler Bank Tubes & All Profiles, Bend Required in Re-Tubing of Boiler.

ERECTION & COMMISSIONING:

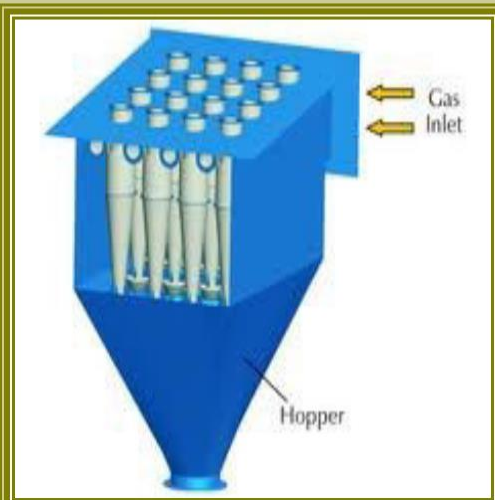
- We Undertake Installation of Machinery, Tank and Structure Fabrication, Piping, Insulation, Electrical Cabling & Also Complete Commissioning of Boiler Plant.

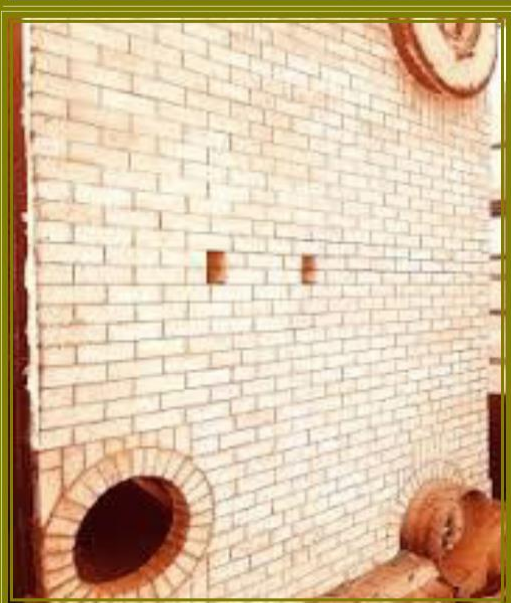
TROUBLE SHOOTING & TECHNICAL AUDIT:

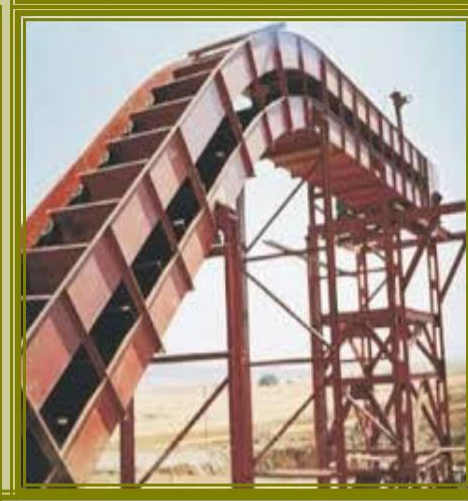
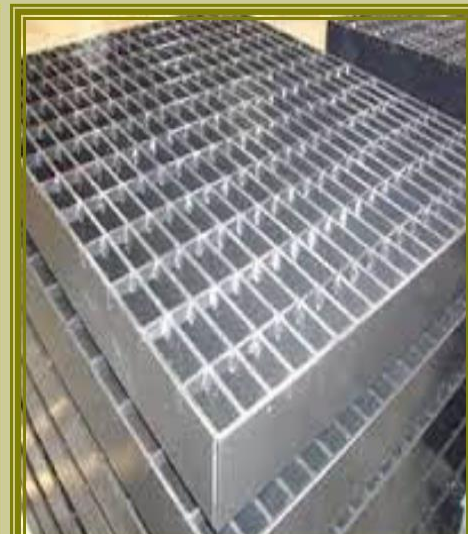
- Our Knowledge of Process & Our Ability to Diagnose & Resolve, Enable Us to Help You in Trouble Shooting and Conducting Technical Audit of Existing Sugar Plant.











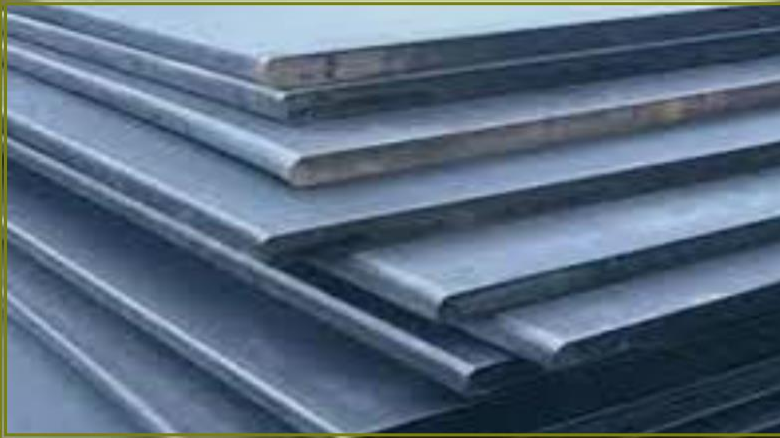








STEAM & POWER ENGINEERS



Reg. Office: A-4/306, Rakshak Nagar Gold, Nagar - Solapur Bypass, Kharadi, Pune – 411014, India (Maharashtra)

Contact : +91 8554985709 /+91 8554985710 **Mobile :** +91 9850908663 /+91 9921096172

E-mail : spe.pune@gmail.com, spe.pune@rediffmail.com

Website : www.speboilers.com